



MATHS FAQ



1

WHAT SUPPORT WILL MY DAUGHTER GET IF SHE IS STRUGGLING IN MATHS?

We complete assessments every half term to identify any student who needs additional support and the teacher and key stage 3 coordinator will put support in place if required

2

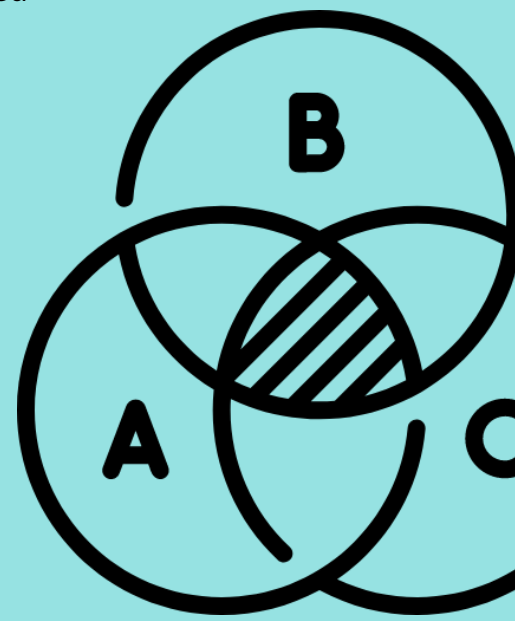
DO YOU GET SET IN MATHS?

We do normally set in maths from year 7 to 11. Although currently we have mixed ability groups in years 7 to 9

3

WHAT GCSE EXAM BOARD DO YOU USE?

We complete the GCSE maths and GCSE statistics both with the exam board Pearson Edexcel . Students can select GCSE statistics as one of their options for year 10



4

DO YOU GET STUDENTS TO SIT THE GCSE MATHS EARLY?

No, we have all students take their GCSE maths in the May/June exam period in year 11



5

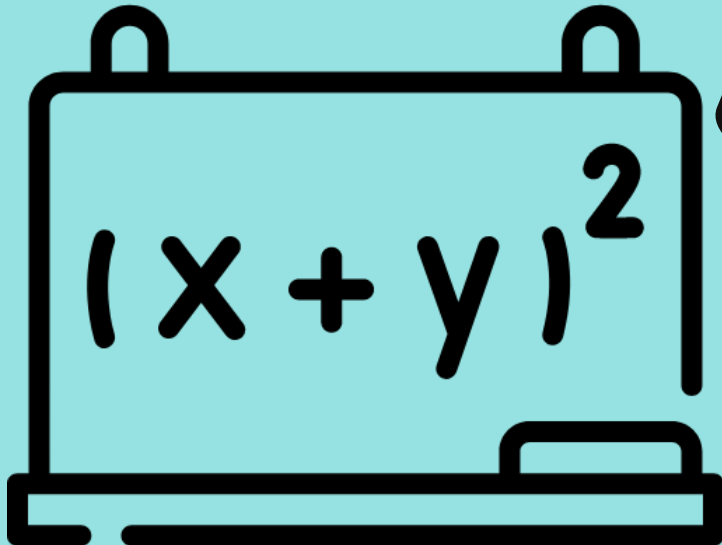
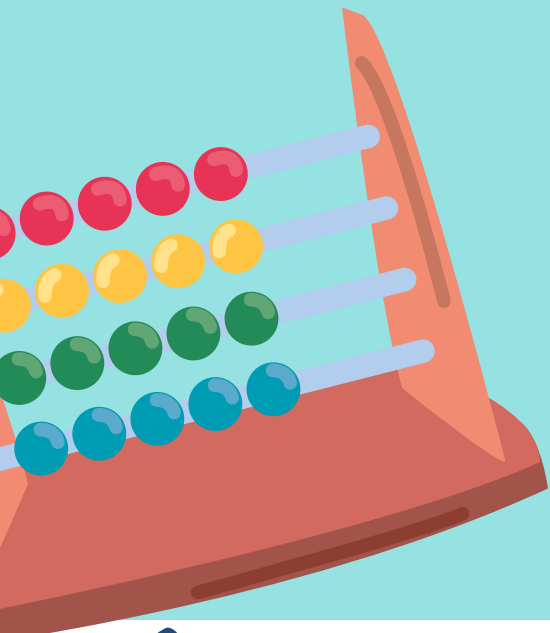
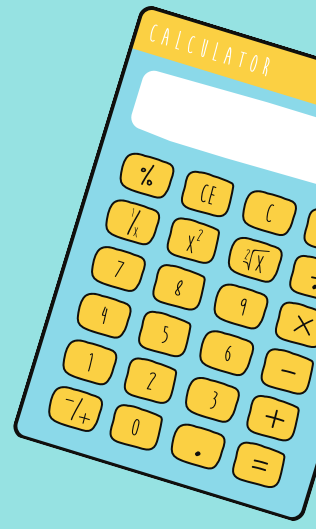
HOW DO YOU SET HOMEWORK?

We set worksheet homework as well as online homework tasks and use Microsoft teams with our classes

6

WHAT TOPICS WILL MY DAUGHTER BE STUDYING?

We cover a range of topics from number, algebra, geometry , statistics and probability and ratio. We publish the topics that we cover in each year group on our school website



020 8303 1887



admin@blackfen-hayley.sch.uk